



Condominios
Planta Baja



Santamarina
BARRIO PRIVADO



Condominios
Primer Piso



Santamarina
BARRIO PRIVADO

Condominios Segundo Piso



Santamarina
BARRIO PRIVADO



Condominios
Tercer Piso

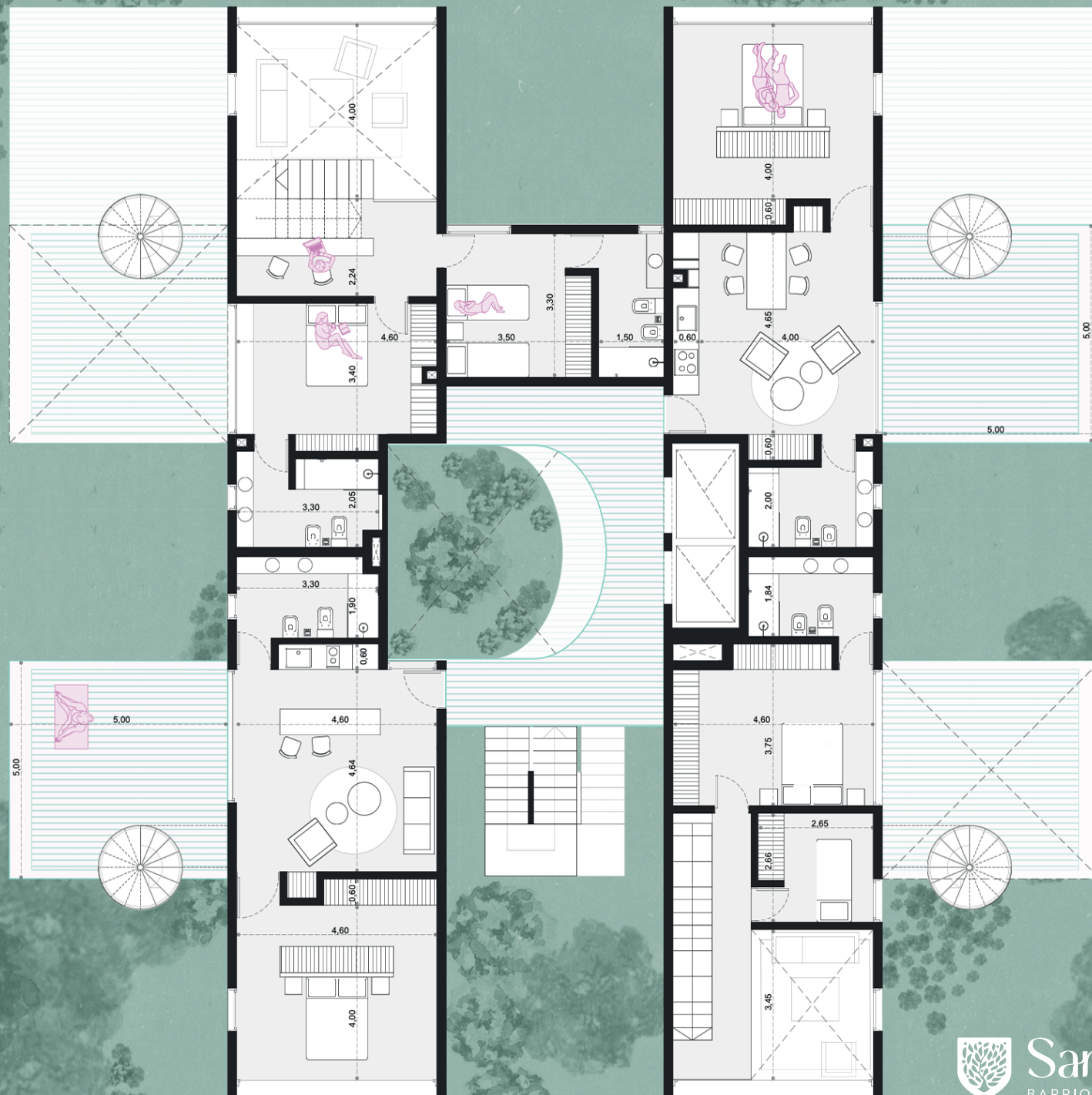


Santamarina
BARRIO PRIVADO

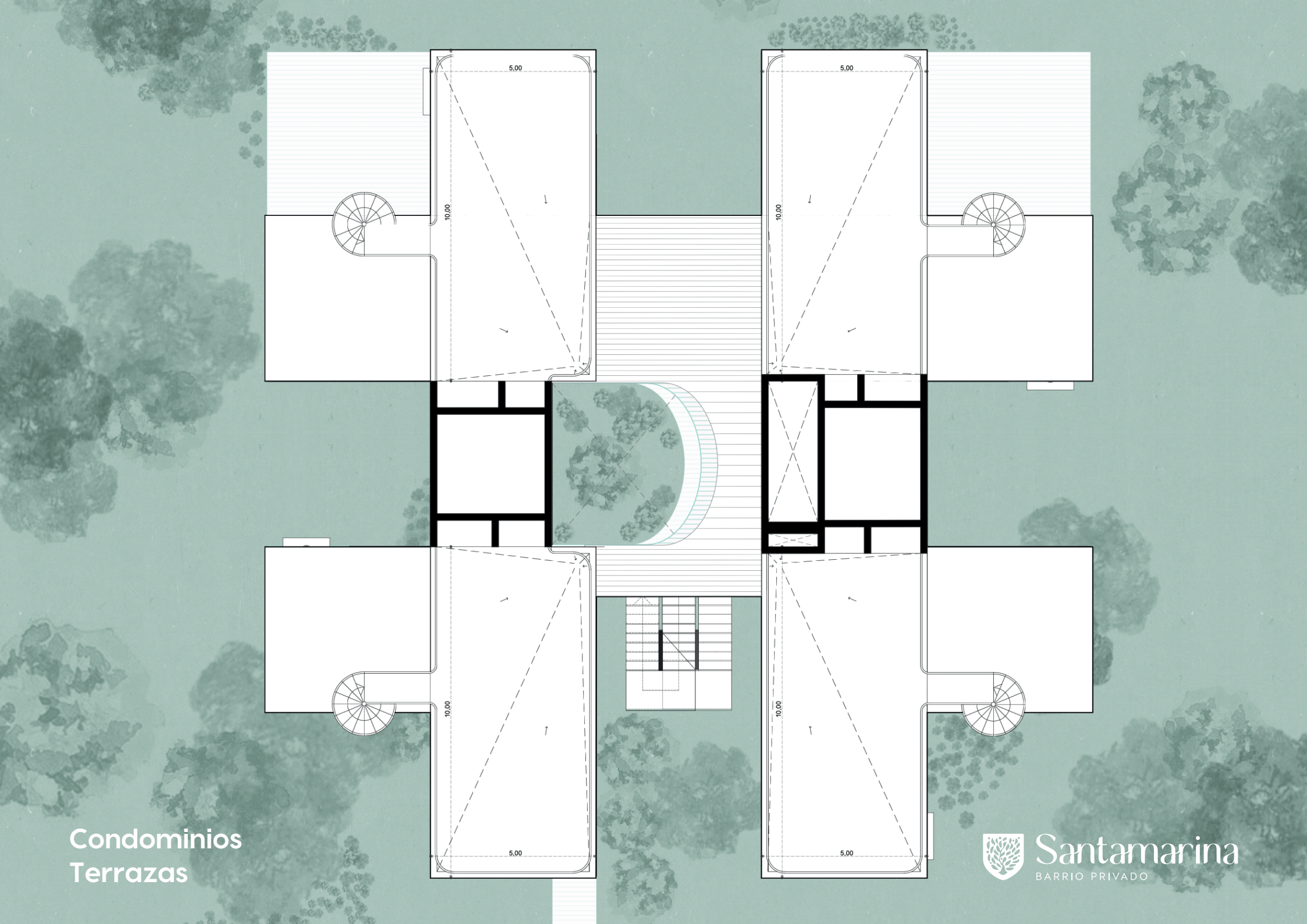
This architectural floor plan illustrates a multi-unit residential building. The layout includes several distinct living units, each equipped with a living area, dining space, kitchen, and bedrooms. Key features include:

- Living and Dining Areas:** Units are furnished with sofas, armchairs, and dining tables. Dimensions for these spaces range from 4.60 to 7.80 meters.
- Kitchens:** Each unit has a kitchen with a sink, stove, and refrigerator. Kitchen dimensions are typically between 2.30 and 3.30 meters.
- Bedrooms:** Bedrooms are shown with beds and wardrobes. Dimensions vary, with some rooms being 3.14 or 3.30 meters wide.
- Bathrooms:** Bathrooms are compact, with dimensions around 1.30 to 1.85 meters.
- Central Courtyard:** A large central courtyard area is depicted with greenery and a pink elephant icon, suggesting a landscaped outdoor space.
- Staircases:** Multiple staircases are shown throughout the plan, indicating vertical circulation between floors.
- Dimensions:** Various dimensions are labeled throughout the plan, such as 5.00, 4.60, 3.14, 2.85, and 1.70, providing scale to the drawing.

Condominios Quinto Piso



Santamarina
BARRIO PRIVADO



Condominios
Terrazas



Santamarina
BARRIO PRIVADO